



*Monorail tubulaire 40/49 constitué de:*

*Tube diamètre 48.3 mm en acier ép 4 mm*

*Chaise acier soudée au rail ,le tout galvanisé à chaud après fabrication.*

*Aiguillage type rotatif en acier galvanisée (aiguille en fonte shérardisée)*

*Aiguillage pneumatique à débattement horizontal commande manuel ou par automate*



*Tubular monorail 40/49 consisting of:*

*Tube diameter 48.3 mm in steel thickness 4 mm*

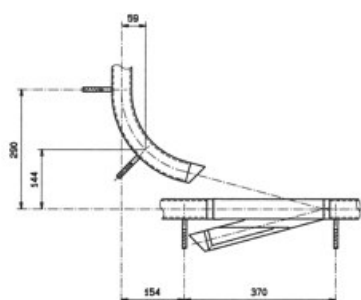
*Steel support welded to the rail, all hot-dip galvanized after manufacture.*

*Manual rotary switch in galvanized steel*

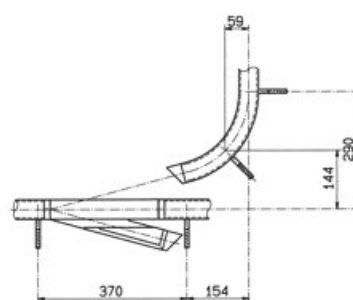
*Pneumatic switch with horizontal movement, manual or automatic control*

**AIGUILLAGES ROTATIFS ET PNEUMATIQUES**

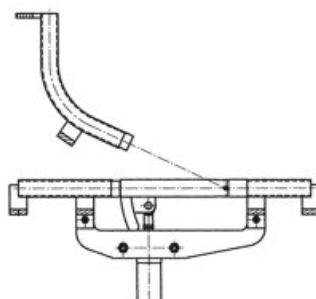
**ROTATING AND PNEUMATIC SWITCHES**



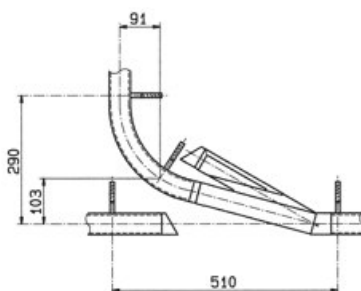
INTERIEUR DROIT  
REF. ARO 050



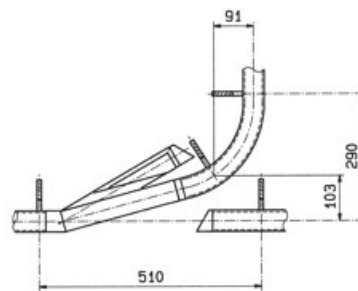
INTERIEUR GAUCHE  
REF. ARO 060



AIGUILLAGE  
PNEUMATIQUE



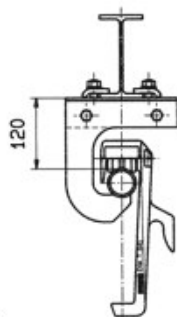
EXTERIEUR DROIT  
REF. ARO 070



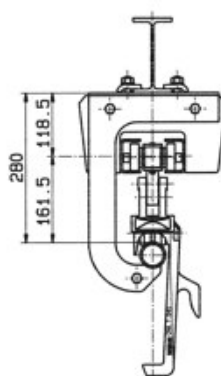
EXTERIEUR GAUCHE  
REF. ARO 080

**CHAISES DE SUSPENSION**

**HANGING BRACKETS**



POUR RESEAU MANUEL  
FOR NON MECHANISED RAIL  
REF. CES.T-040



POUR RESEAU CONVOYE  
FOR MECHANISED RAIL  
REF. CES.T-060